



WEARPLEX Beta Workshop: EMG recording applications



Strahinja Dosen

Erika G. Spaich

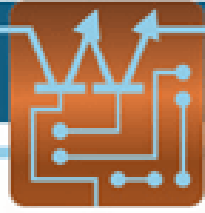
Luis Murciago

Mauricio Henrich

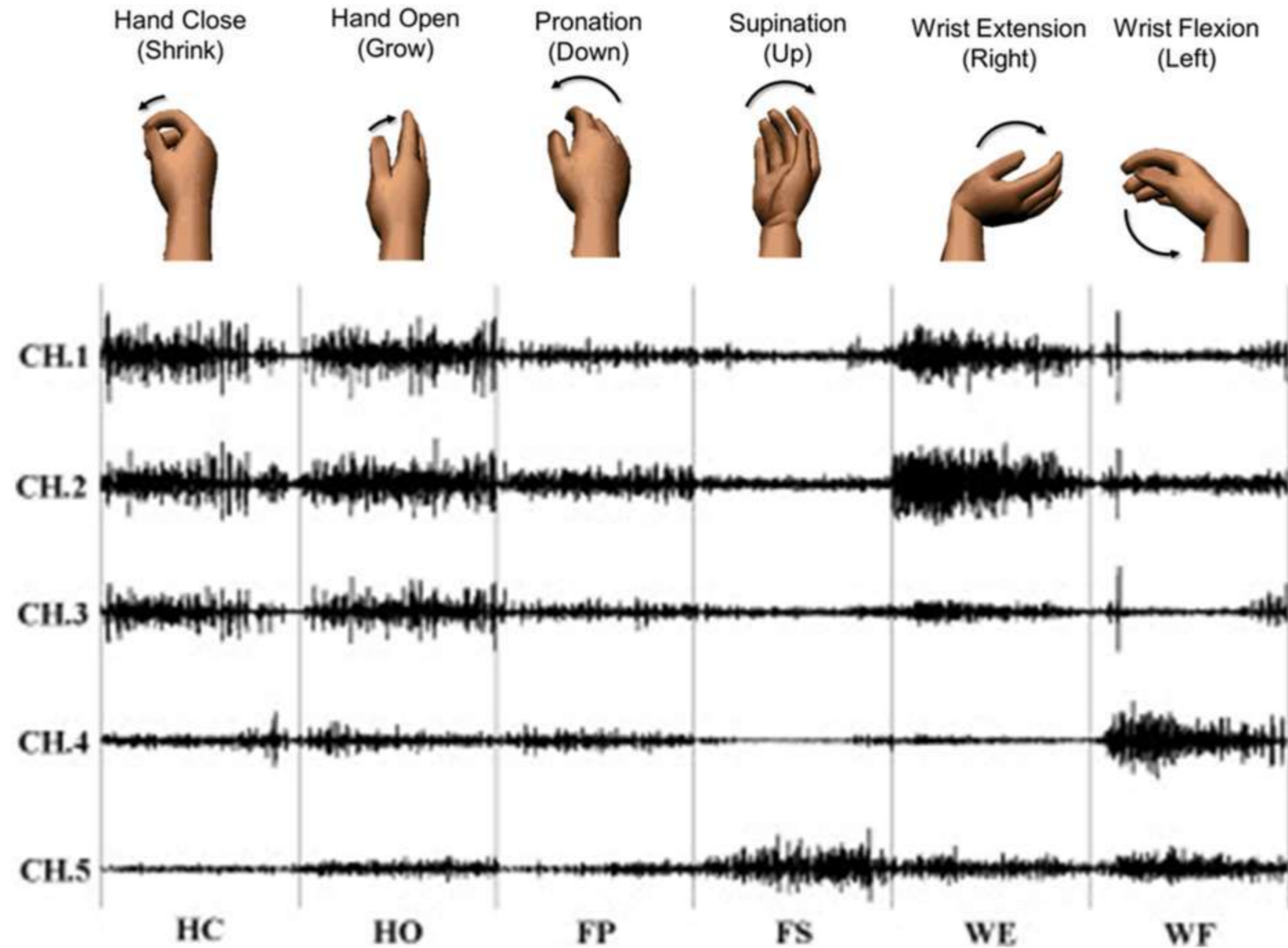
Aalborg University, Denmark

24th March 2021





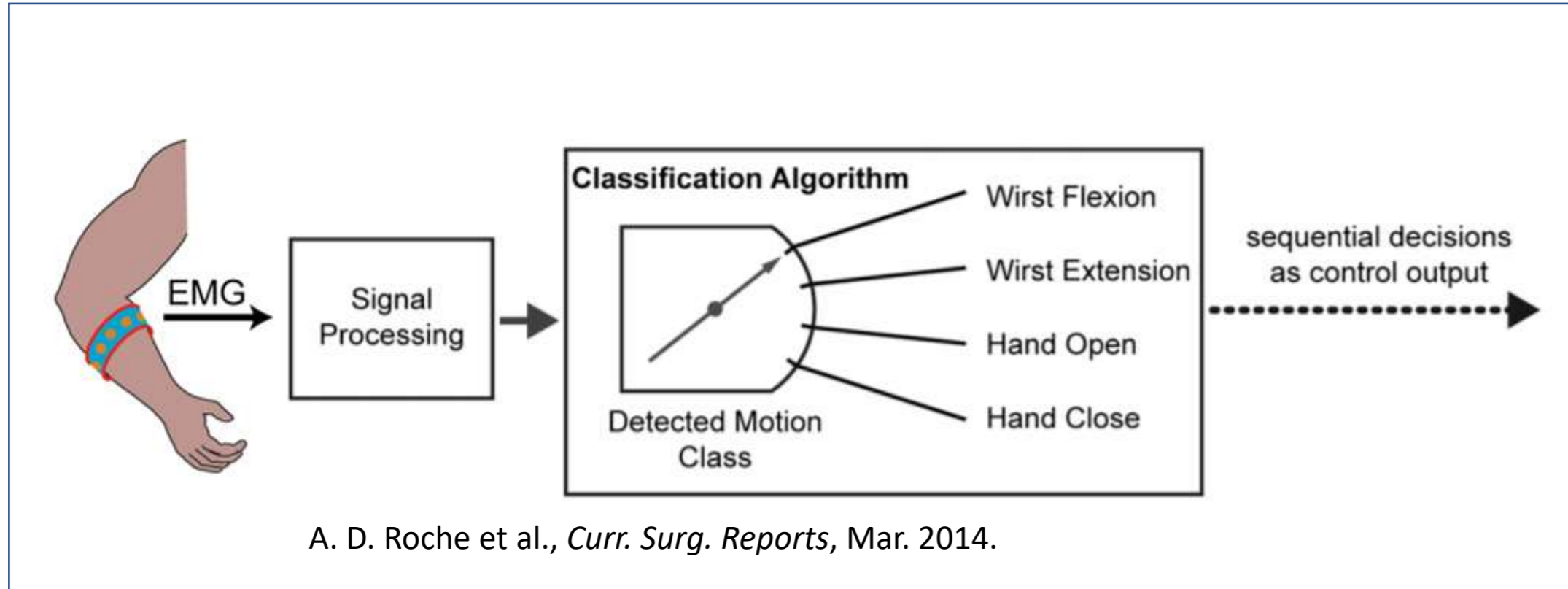
The principle of multichannel EMG



R. N. Khushaba et al., *Expert Syst. Appl.*, vol. 61, 2016.



Multichannel EMG for intuitive control



www.techidence.com



blog.robotiq.com



© Otto Bock



© AAU



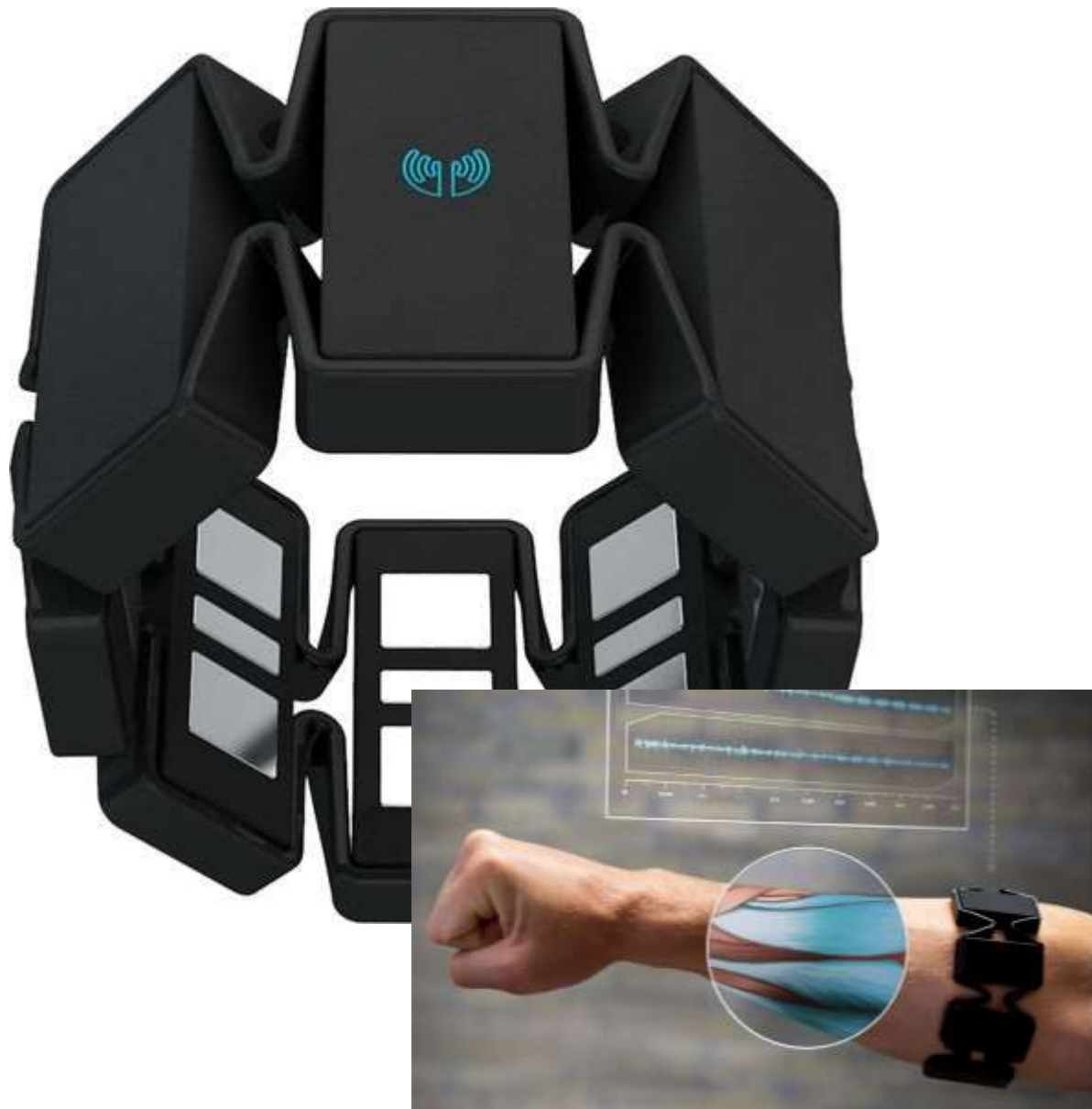
© Thalmic labs



© Mashable




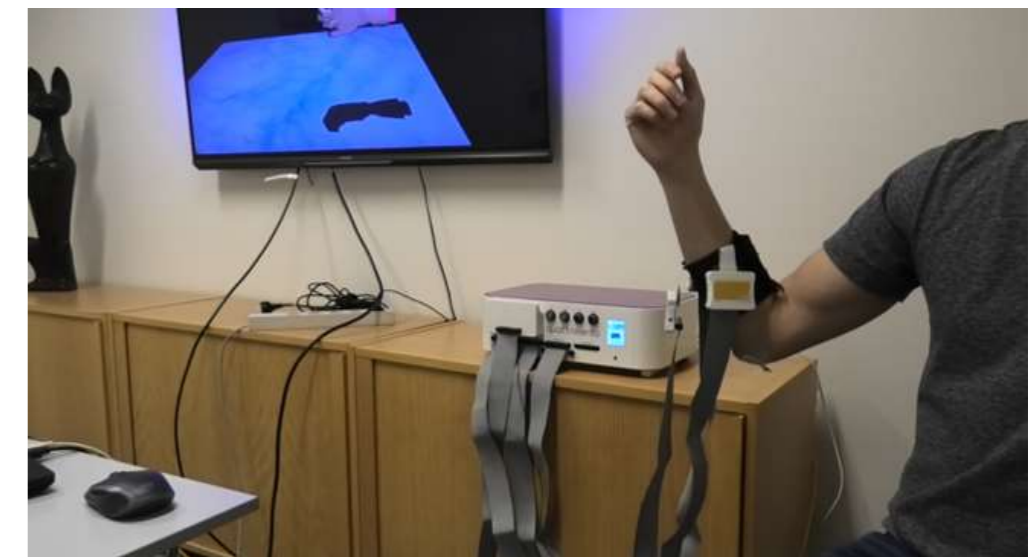
State of the art approach



 **THALMICLABS™**



 **CTRL-Labs**  **Facebook Reality Labs**





WEARPLEX approach and progression

Textile, dry and 48 channels

